



Rabbit anti IKK-a (Paired 176/180) Polyclonal Antibody

Alternative Name(s): I-kappa-B kinase-1

Order Information

- **Description:** IKK-a (Paired 176/180)
- **Catalogue:** 620-860
- **Lot:** See label
- **Size:** 100ug/200ul
- **Host:** Rabbit
- **Clone:** nan
- **Application:** IHC(P), WB
- **Reactivity:** hu, Ms, Rt,

ANTIGEN PREPARATION

A synthetic peptide VDQG-S-LCT-S of human IKK-alpha

BACKGROUND

Nuclear factor kappa B (NFkappaB) is a ubiquitous and an essential mediator of gene expression during activation of immune and inflammatory responses. NFkappaB mediates the expression of a great variety of genes in response to extracellular stimuli. NFkappaB is associated with IkappaB proteins in the cell cytoplasm, which inhibit NFkappaB activity. IkappaB is phosphorylated by IkappaB kinase (IKK) complex that contains IKKalpha, IKKbeta, and IKKgama. A novel molecule in the IKK complex was recently identified and designated IKKepsilon/IKK-iota. The NFkB complex is inhibited by I-kappa-B proteins, which inactivate NF-kappa-B by trapping it in the cytoplasm. Phosphorylation of serine residues on the I-kappa-B proteins by kinases marks them for destruction via the ubiquitination pathway, thereby allowing activation of the NF-kappa-B complex. Activated NFkB complex translocates into the nucleus and binds DNA at kappa-B-binding motifs.

PURIFICATION

The Rabbit IgG is purified by Epitope Affinity Purification

FORMULATION

This affinity purified antibody is supplied in sterile Phosphatebuffered saline (pH7.2) containing antibody stabilizer

SPECIFICITY

This antibody recognizes human IKK-a (Paired 176/180) protein without the phosphorylation S176/180.

STORAGE

The antibodies are stable for 24 months from date of receipt when stored at -20oC to -70oC. The antibodies can be stored at 2oC-8oC for three month without detectable loss of activity. Avoid repeated freezing-thawing cycles.

APPLICATIONS/SUGGESTED WORKING DILUTIONS*

- Western Blot: 0.1-1 µg/ml
- ELISA: 0.01-0.1 µg/ml
- Immunoprecipitation: 2-5 µg/ml
- IHC: 2-10 µg/ml
- Flow cytometry: Not tested
- Molecular Weight: 85-100
- Positive Control: Kidney Tissue
- Cellular Location: Cell Membrane

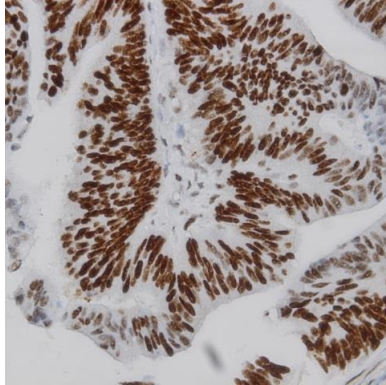
*Optimal dilutions should be determined by researchers for the specific applications.

FOR RESEARCH USE ONLY.

AbboMax, Inc 2528 Qume Drive, Suite 8, San Jose, California 95131, USA
1 408-573-1898 (Tel). 1 408-573-1858 (Fax). www.abbomax.com info@abbomax.com



DATA ATTACHMENTS



Immunohistochemistry: Human breast carcinoma (FFPE) stained with Rabbit anti-IKK-alpha (paired Y176) (Cat#620-860) at 1:200 for 10 min @ RT. Staining of formalin-fixed tissue requires boiling tissue sections in 10 mM Citrate Buffer, pH 6.0 for 10 min followed by cooling at RT for 20 min.

REFERENCES

FOR RESEARCH USE ONLY.

AbboMax, Inc 2528 Qume Drive, Suite 8, San Jose, California 95131, USA
1 408-573-1898 (Tel). 1 408-573-1858 (Fax). www.abbomax.com info@abbomax.com